

Recycling Guidelines for Multi-Family Housing Properties

Bloomsburg requires multi-family properties with more than four (4) units to separate and recycle:

Clear, green and brown glass bottles and jars – emptied, rinsed, lids removed and separated by color.

Steel and aluminum cans – emptied, rinsed and separated

Newspapers

#1 and #2 plastic bottles and jars –emptied, rinsed, lids removed

The landlord or agent of each property shall require tenants to recycle by a clause in the lease or other enforceable rule or regulation and to abide by requirements set forth in Ordinance #862.

The landlord or agent is responsible for setting up a convenient location for the collection and storage of all recyclables. Clearly marked recycling containers must be set out for tenants' recyclables. The landlord or agent is to make arrangements for the materials to be delivered to a recycling facility. A code enforcement officer will verify that a recycling system exists during annual inspections.

Methods of removal of recyclables:

Landlord or agent may deliver the recyclables directly to a recycling center

Contract with a private hauler for the removal of recyclables or

Owners may elect to have recyclable materials collected curbside. (Should this method be chosen, the owner would be subject to the same recycling fee for each dwelling unit as those residents eligible for curbside recycling dwelling unit.)

A quarterly Recycling Report will be necessary for properties that do not have their recyclables delivered to Bloomsburg's Recycling Center. Weigh slips for all materials recycled during the quarter must accompany the report.

For more information about Bloomsburg's Recycling Program or for copies of quarterly recycling report forms check out the Town's website at www.bloomsburgpa.org

Questions regarding Bloomsburg's recycling program should be directed to Charles Fritz, Environmental Services Administrator, at 784-4532 or cfritz@bloomsburgpa.org.

Town of Bloomsburg
Recycling Center
301 East 2nd Street
Bloomsburg, PA 17815
(570) 784-4532

Recycling Center located at:

901 Patterson Drive

Center Hours:

Mon., Tues, Thurs, 7:00am — 3:30pm

Wednesday 7:00am — 5:00pm

Friday 7:00 am — 3:00pm

2nd & 4th Saturday of each month 9:00am- 1:00pm

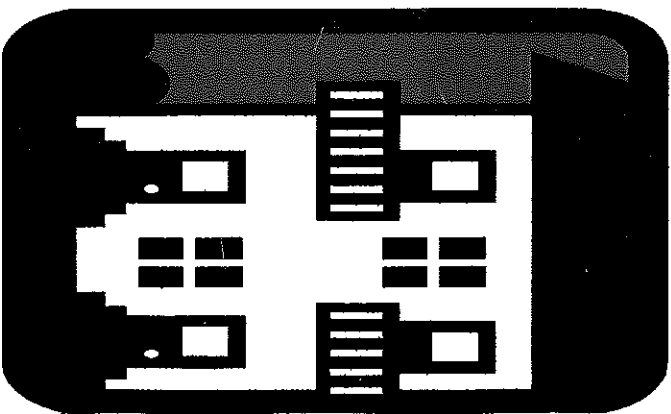
CLOSED HOLIDAYS

**Town of Bloomsburg
Recycling Center
301 East 2nd Street
Bloomsburg, PA 17815**

Printed on Recycled Paper

"Recycle with Us"

Town of Bloomsburg Multi-Family Housing Guide



Tel (570) 784-4532